

FED. ROAD DIST. NO.	STATE	PROJ. NO.	FISCAL YEAR	SHEET NO.	TOTAL SHEETS
UTAH	UTAH	NS-561(1)		4	

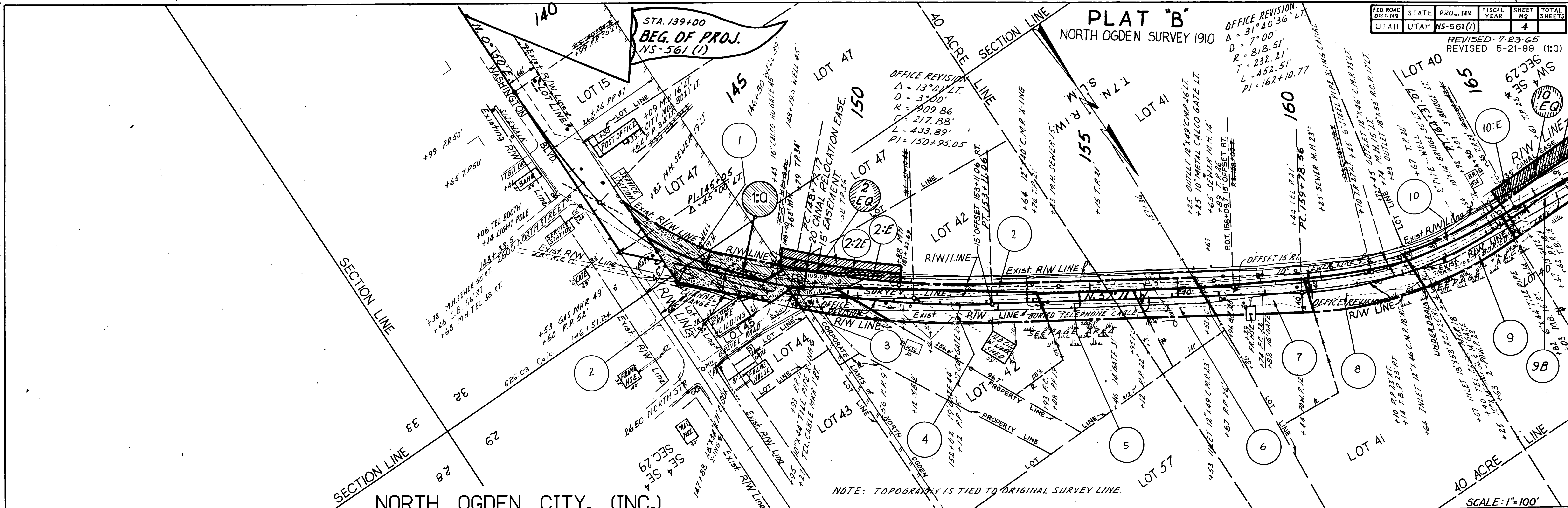
REVISED 7-23-65
REVISED 5-21-99 (1:0)

PLAT "B"
NORTH OGDEN SURVEY 1910

OFFICE REVISION:
Δ = 31° 40' 36" LT.
D = 7° 00'
R = 818.51'
T = 232.21'
L = 452.51'
PI = 162+10.77

DATE	BY
6/29/60	W.M. MARSHALL
7/27/60	W.M. MARSHALL
8/1/60	W.M. MARSHALL
8/1/60	W.M. MARSHALL
8/1/60	W.M. MARSHALL

DATE	BY
6/29/60	W.M. MARSHALL
7/27/60	W.M. MARSHALL
8/1/60	W.M. MARSHALL
8/1/60	W.M. MARSHALL
8/1/60	W.M. MARSHALL



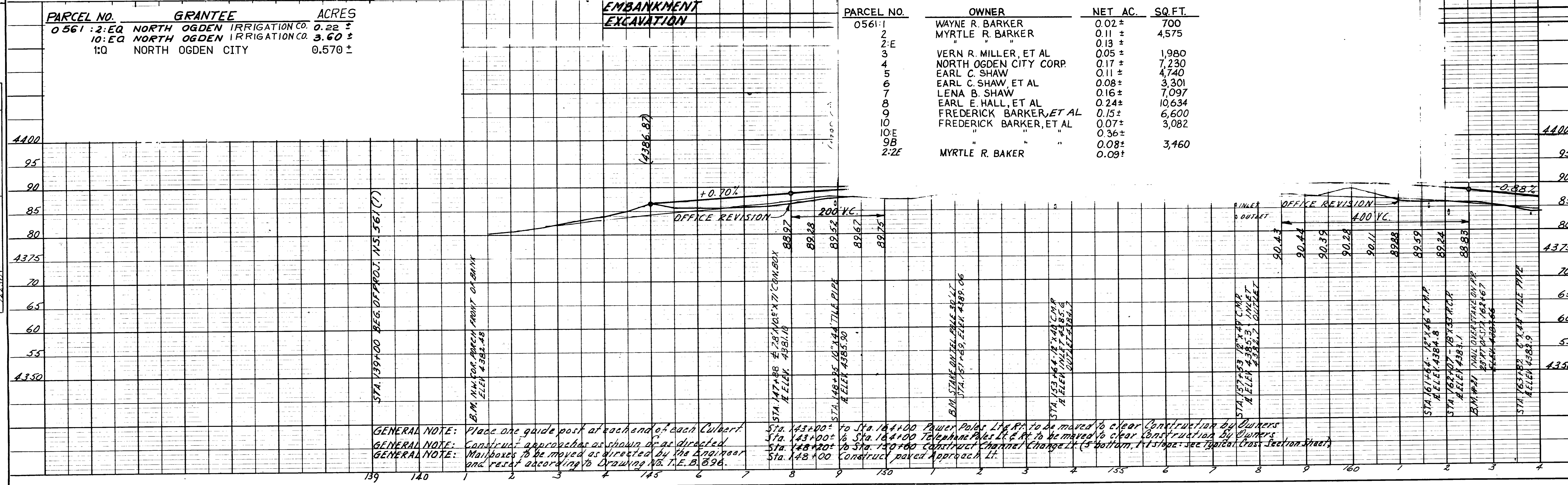
NOTE: TOPOGRAPHY IS TIED TO ORIGINAL SURVEY LINE.

SCALE: 1"=100'

PARCEL NO.	GRANTEE	ACRES
0.561	2:EQ NORTH OGDEN IRRIGATION CO.	0.22 ±
	10:EQ NORTH OGDEN IRRIGATION CO.	3.60 ±
	1:Q NORTH OGDEN CITY	0.570 ±

EMBANKMENT EXCAVATION

PARCEL NO.	OWNER	NET AC.	SQ. FT.
0561:1	WAYNE R. BARKER	0.02 ±	700
2	MYRTLE R. BARKER	0.11 ±	4,575
2:E		0.13 ±	
3	VERN R. MILLER, ET AL	0.05 ±	1,980
4	NORTH OGDEN CITY CORP.	0.17 ±	7,230
5	EARL C. SHAW	0.11 ±	4,740
6	EARL C. SHAW, ET AL	0.08 ±	3,301
7	LENA B. SHAW	0.16 ±	7,097
8	EARL E. HALL, ET AL	0.24 ±	10,634
9	FREDERICK BARKER, ET AL	0.15 ±	6,600
10	FREDERICK BARKER, ET AL	0.07 ±	3,082
10:E		0.36 ±	
9B		0.08 ±	3,460
2:ZE	MYRTLE R. BAKER	0.09 ±	

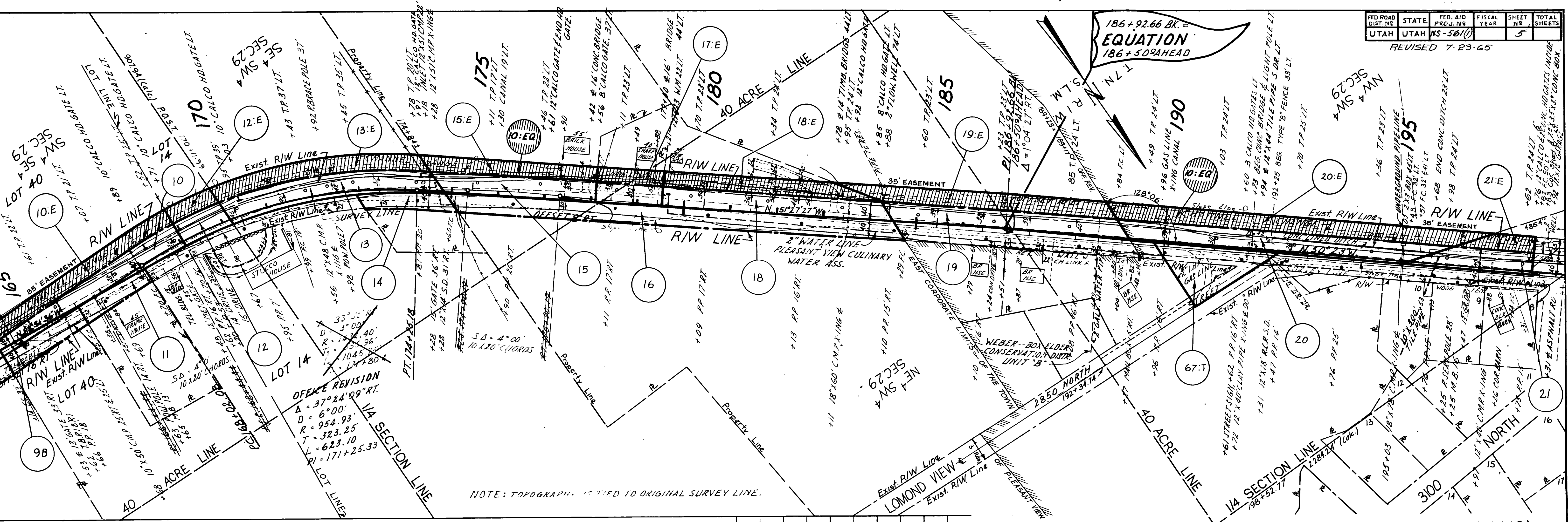


GENERAL NOTE: Place one guide post at each end of each Culvert.
 GENERAL NOTE: Construct approaches as shown or as directed.
 GENERAL NOTE: Mailboxes to be moved as directed by the Engineer and reset according to Drawing No. T.E. B. 896.

Sta. 143+00 to Sta. 144+00 Power Poles 17' R.P. to be moved to clear Construction by Owners
 Sta. 143+00 to Sta. 144+00 Telephone Poles 17' R.P. to be moved to clear Construction by Owners
 Sta. 148+00 to Sta. 150+00 Construct Channel Change Lt. (5' bottom, 1' slope; see Typical Cross Section Sheet)
 Sta. 148+00 Construct paved Approach Lt.

PLAN
 SURVEYED BY: W. W. WILSON
 ALIGNED BY: W. W. WILSON
 CHECKED BY: W. W. WILSON
 DATE: 12-22-60
 NO. 1222-00
 1/2" = 100'
 RT. OF WAY CHECKED

PROFILE
 SURVEYED BY: W. W. WILSON
 PLOTTED BY: W. W. WILSON
 CHECKED BY: W. W. WILSON
 DATE: 12-22-60
 NO. 1222-00
 1" = 100'
 THE NOTARIS OFFICE



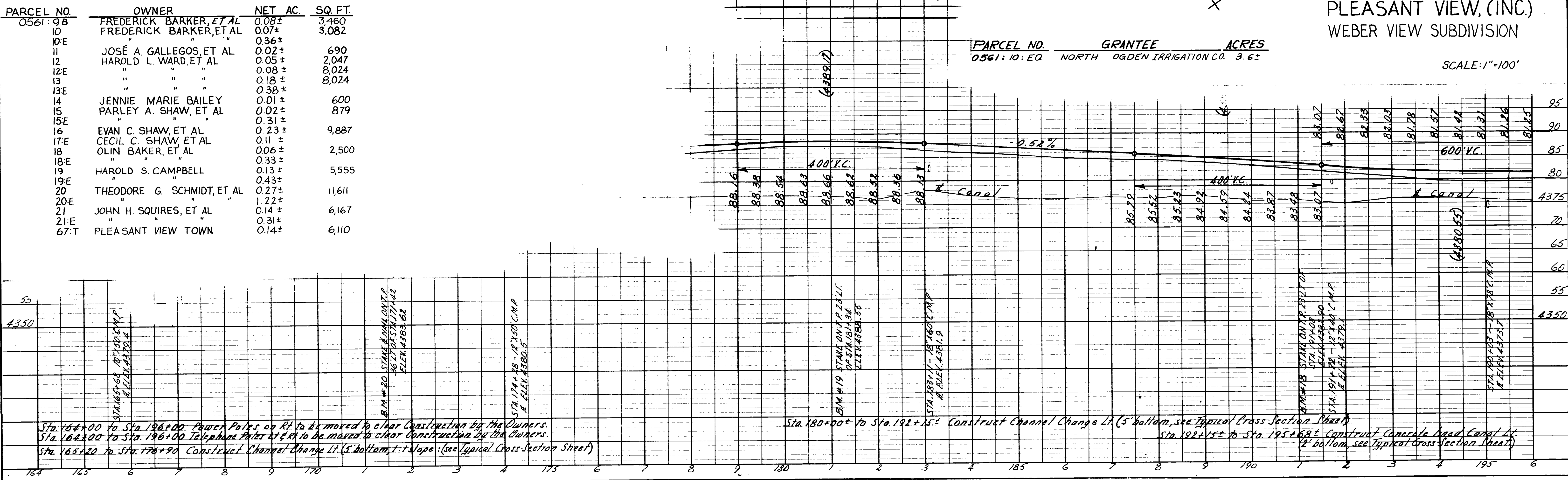
NOTE: TOPOGRAPHY IS TIED TO ORIGINAL SURVEY LINE.

PARCEL NO.	OWNER	NET AC.	SQ. FT.
0561: 9B	FREDERICK BARKER, ET AL	0.08±	3,460
10	FREDERICK BARKER, ET AL	0.07±	3,082
10E	"	0.36±	"
11	JOSÉ A. GALLEGOS, ET AL	0.02±	690
12	HAROLD L. WARD, ET AL	0.05±	2,047
12E	"	0.08±	8,024
13	"	0.18±	8,024
13E	"	0.38±	"
14	JENNIE MARIE BAILEY	0.01±	600
15	PARLEY A. SHAW, ET AL	0.02±	879
15E	"	0.31±	"
16	EVAN C. SHAW, ET AL	0.23±	9,887
17E	CECIL C. SHAW, ET AL	0.11±	"
18	OLIN BAKER, ET AL	0.06±	2,500
18E	"	0.33±	"
19	HAROLD S. CAMPBELL	0.13±	5,555
19E	"	0.43±	"
20	THEODORE G. SCHMIDT, ET AL	0.27±	11,611
20E	"	1.22±	"
21	JOHN H. SQUIRES, ET AL	0.14±	6,167
21E	"	0.31±	"
67:T	PLEASANT VIEW TOWN	0.14±	6,110

PARCEL NO. GRANTEE ACRES
 0561: 10: EQ NORTH OGDEN IRRIGATION CO. 3.6±

PLEASANT VIEW, (INC.)
 WEBER VIEW SUBDIVISION

SCALE: 1" = 100'



Sta. 164+00 to Sta. 196+00 Power Poles on Rt. to be moved to clear Construction by the Owners.
 Sta. 164+00 to Sta. 196+00 Telephone Poles Lt. & Rt. to be moved to clear Construction by the Owners.
 Sta. 165+20 to Sta. 176+90 Construct Channel Change Lt. (5' bottom, 1:1 slope. (see Typical Cross Section Sheet)

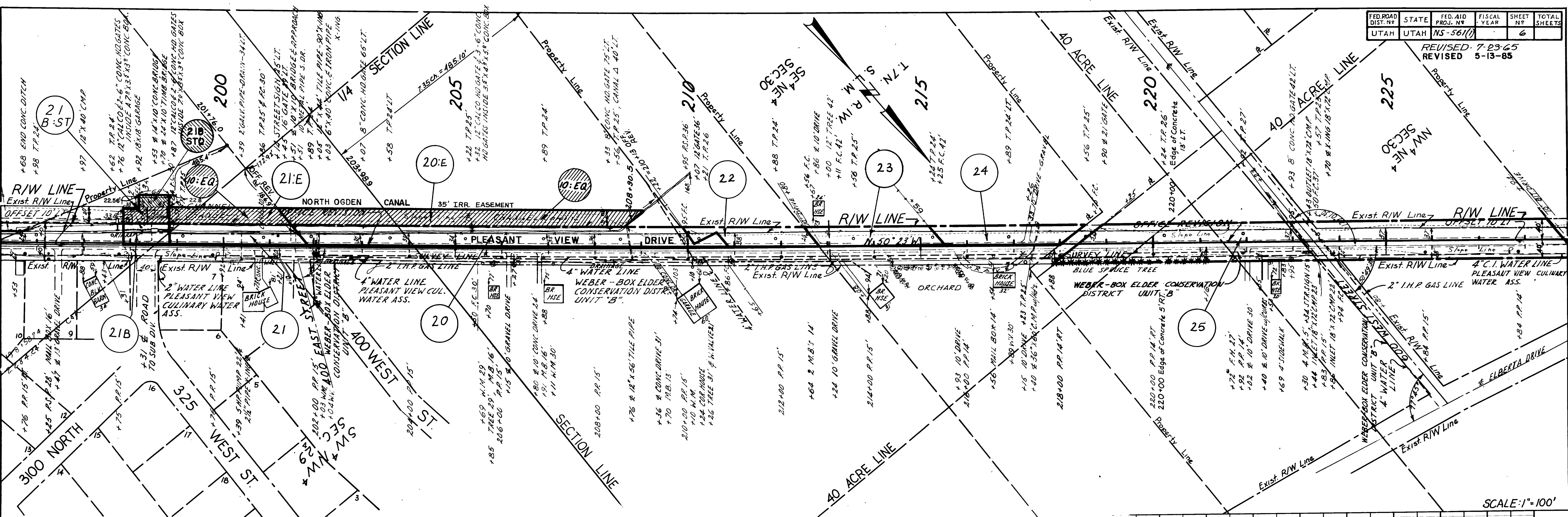
Sta. 180+00± to Sta. 192+15± Construct Channel Change Lt. (5' bottom, see Typical Cross Section Sheet)
 Sta. 192+15± to Sta. 195+68± Construct Concrete Inlet Canal Lt. (2' bottom, see Typical Cross Section Sheet)

REVISED 7-23-65
REVISED 5-13-85

REV. 3/1963

DATE 6-22-65
BY W.H. HARRISON
SURVEYED W.H. HARRISON
PLOTTED W.H. HARRISON
NOTE BOOK NO. 12225
ALIGNED CHECKED W.H. HARRISON
NO. 12225

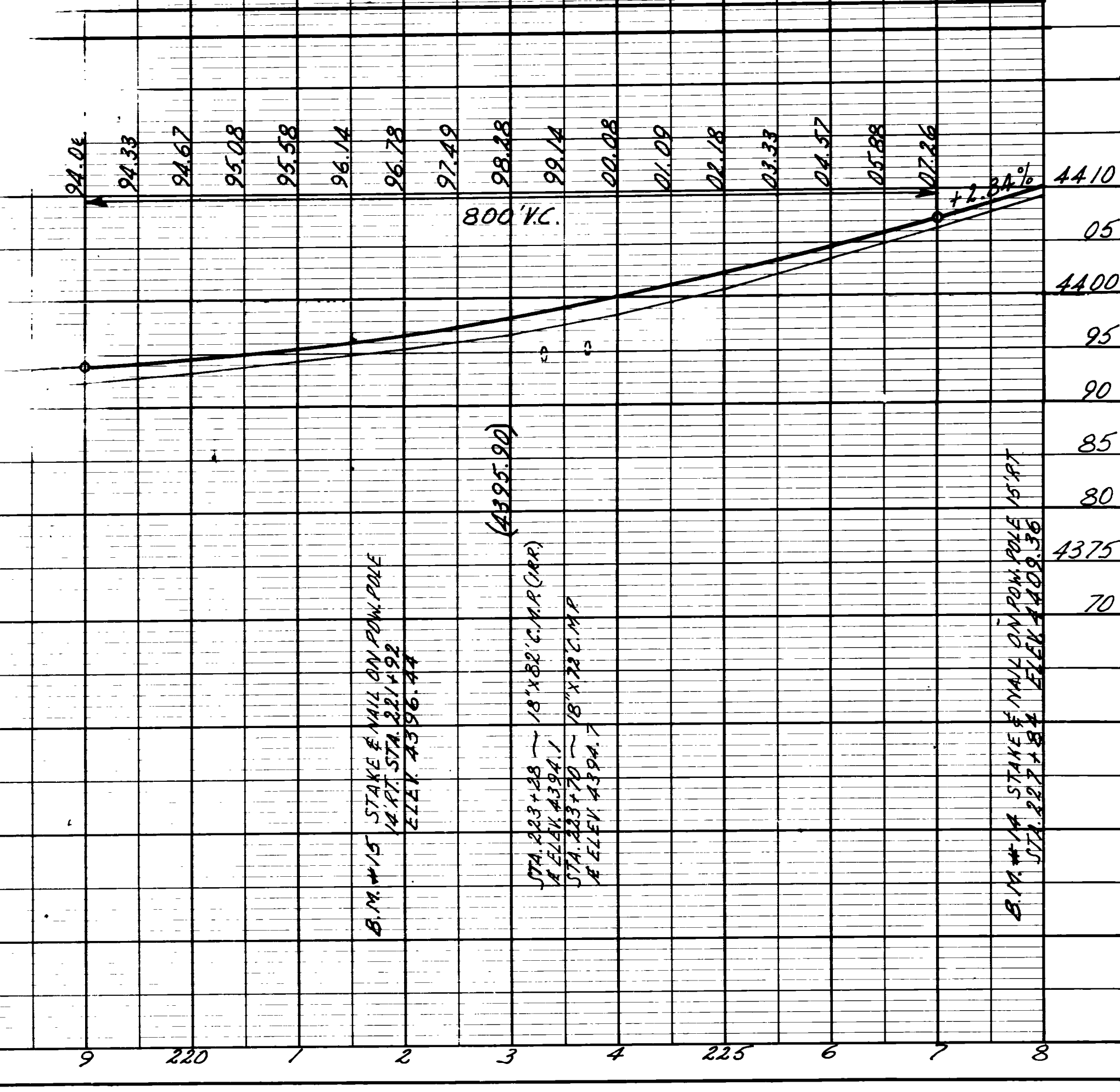
DATE 6-22-65
BY W.H. HARRISON
SURVEYED W.H. HARRISON
PLOTTED W.H. HARRISON
NOTE BOOK NO. 12225
ALIGNED CHECKED W.H. HARRISON
NO. 12225



PLEASANT VIEW, (INC.)
WEBER VIEW SUBDIVISION

PARCEL NO.	GRANTEE	ACRES
0561: 10:EQ	NORTH OGDEN IRRIGATION CO.	3.60±
21B:STQ	SORENSEN DEVELOPMENT, INC.	0.035

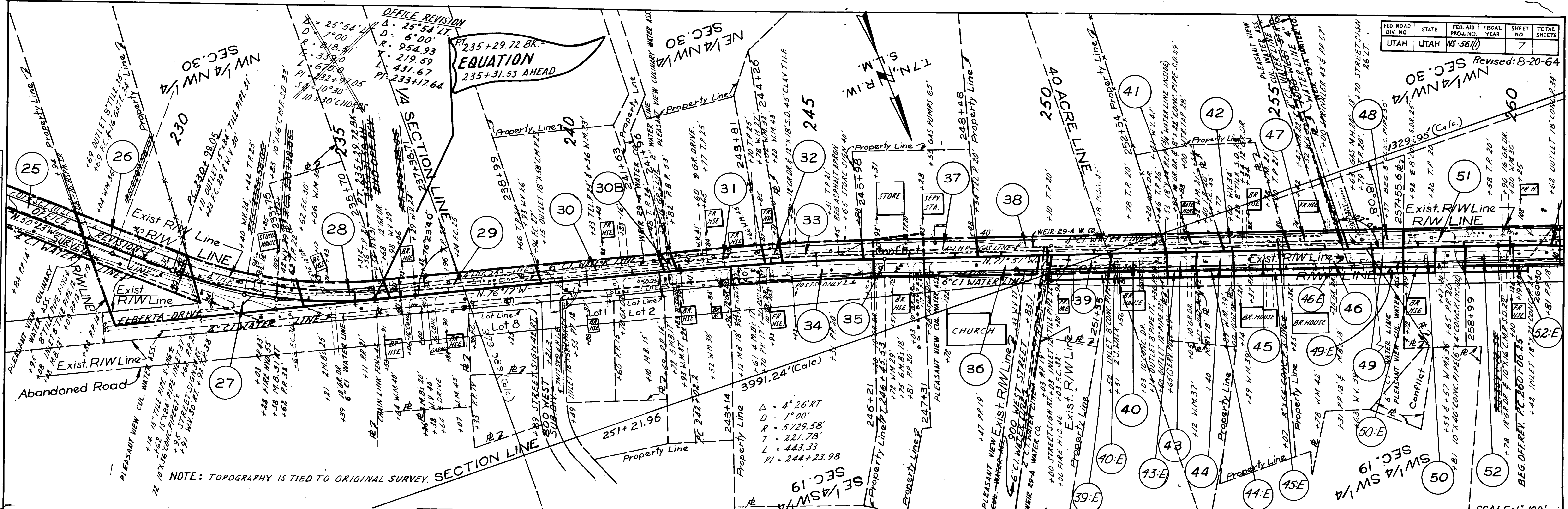
PARCEL NO.	OWNER	NET AC.	SQ. FT.
0561: 21	JOHN H. SQUIRES, ET AL	0.14±	6,167
21:E	"	0.31±	
21B	"	0.03±	1,333
21B:ST	" ET UX	0.12±	5,046
22	ALWYN KENNETH CROSS	0.07±	3,088
23	TULLA D. BARNETT	0.06±	2,520
24	GENE R. PARCELL, ET AL	0.10±	4,352
25	ZENO I. THINNES, ET UX	0.29±	12,610
20	THEODORE G. SCHMIDT, ET AL	0.27±	11,611
20:E	"	1.22±	



Sta. 196+00 to Sta. 228+00 Power Poles on Rt. to be moved to clear Construction by the Owners.
Sta. 196+00 to Sta. 228+00 Telephone Poles on Lt. to be moved to clear Construction by the Owners.
Sta. 195+68± to Sta. 208+76± Construct Channel Change Lt. (5' bottom, see Typical Cross Section Sheet).

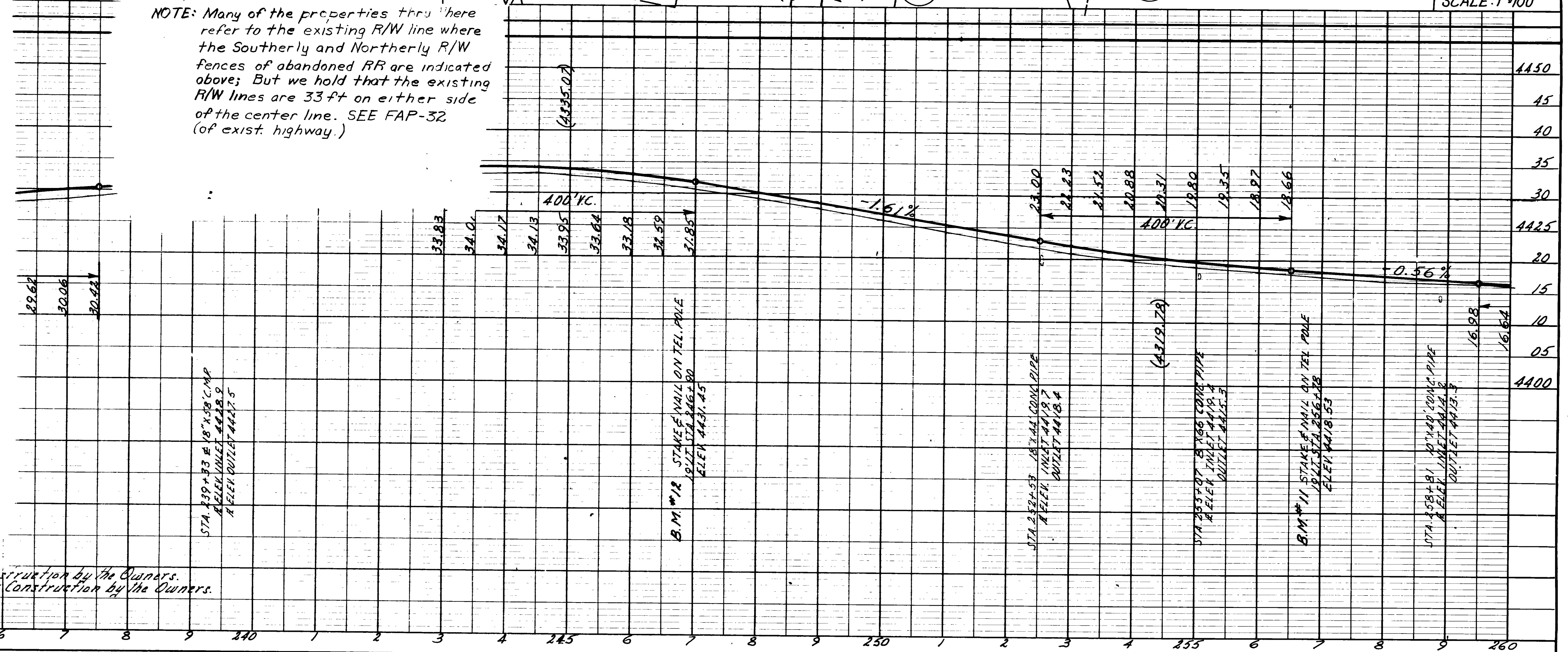
PLAN	DATE	BY	CHECKED
NO. 12222	12/22/62	M. W. MIDDLETON	M. W. MIDDLETON
NO. 12223	12/22/62	M. W. MIDDLETON	M. W. MIDDLETON
NO. 12224	12/22/62	M. W. MIDDLETON	M. W. MIDDLETON

PROFILE	DATE	BY	CHECKED
NO. 12222	12/22/62	M. W. MIDDLETON	M. W. MIDDLETON
NO. 12223	12/22/62	M. W. MIDDLETON	M. W. MIDDLETON
NO. 12224	12/22/62	M. W. MIDDLETON	M. W. MIDDLETON



PARCEL NO.	OWNER	NET AC.	SQ. FT.
0561: 25	ZENO I. THINNES, ET AL	0.29 ±	12,610
26	DONALD A. HALES, ET AL	0.07 ±	3,109
27	EDWARD BERRETI, ET AL	0.32 ±	14,116
28	JENNIE BROWN WINTER	0.06 ±	2,790
29	JOSEPH S. ROYLANCE	0.09 ±	3,948
30	ELMER O. HARRIS, ET AL	0.05 ±	2,112
30B	(BLANK)	0.01 ±	132
31	GEORGE J.A. MIDDLETON (DEAD)	0.02 ±	807
32	JAMES COLETTI	0.01 ±	180
33	WILFORD LEROY BARKER	0.02 ±	1,045
34	LAWRENCE HARRIS, ET AL	0.06 ±	2,466
35	LYNN PULSIPHER, ET AL	0.02 ±	767
36	LDS. CHURCH	0.03 ±	1,500
37	DALE ELLSWORTH, ET AL	0.04 ±	1,750
38	TOWN OF PLEASANT VIEW	0.07 ±	2,884
39	LETTIE M. FERRIN, ET AL	0.02 ±	885
40	FARMER E. JOHNS, ET AL	0.02 ±	902
41	B. L. CRAGUN, ET AL	0.02 ±	840
42	ELMER H. BAILEY, ET AL	0.02 ±	1,050
43	THEOD. OLE ALEX OLSEN, ET AL	0.01 ±	490
44	LEVI E. CRAGUN, ET AL	0.02 ±	700
45	PAUL B. CRAGUN, ET AL	0.03 ±	1,400
47	SHERMAN PARKER, ET AL	0.02 ±	875
48	LEON B. JONES, ET AL	0.02 ±	850
49	ANNIE B. CRAGUN	0.01 ±	450
50	EARL B. CRAGUN, ET AL	0.02 ±	900
51	WELDON B. CRAGUN, ET AL	0.05 ±	2,326
52	LAWRENCE J. HARRIS, ET AL	0.09 ±	3,852
39:E	LETTIE M. FERRIN, ET AL	0.03 ±	
40:E	FARMER E. JOHNS, ET AL	0.03 ±	
43:E	THEOD. OLE ALEX OLSEN, ET AL	0.02 ±	
44:E	LEVI E. CRAGUN, ET AL	0.02 ±	
45:E	PAUL B. CRAGUN, ET AL	0.04 ±	
49:E	ANNIE B. CRAGUN	0.01 ±	
50:E	EARL B. CRAGUN, ET AL	0.02 ±	
52:E	LARENCE J. HARRIS, ET AL	0.03 ±	

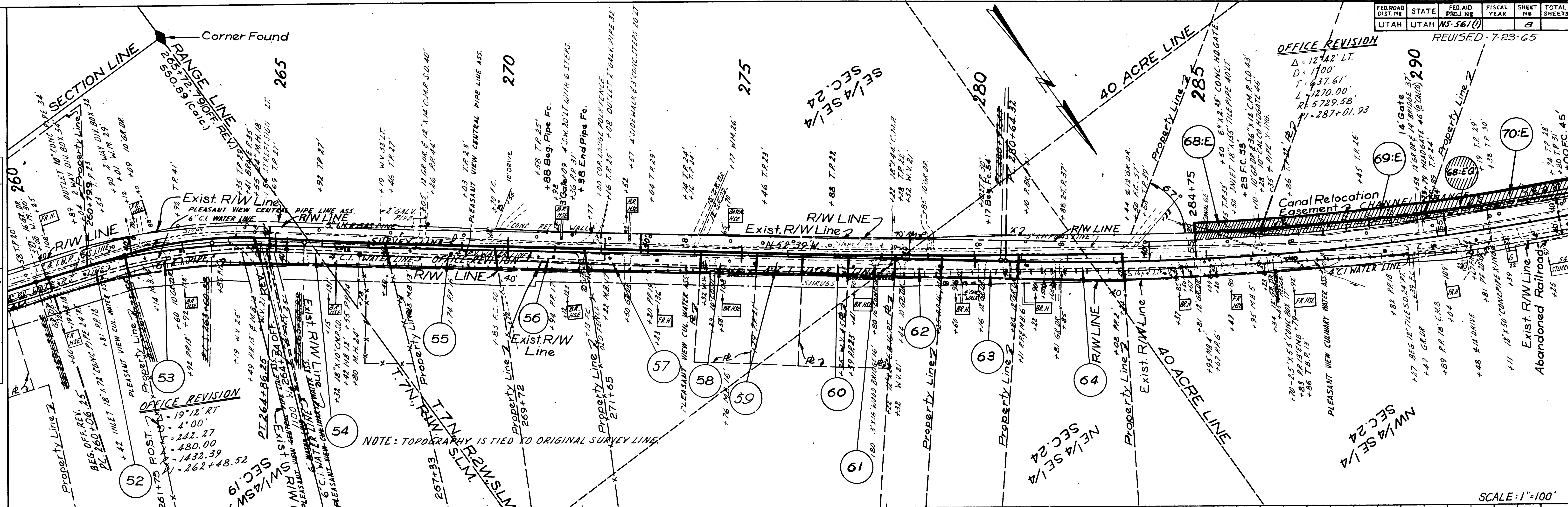
NOTE: Many of the properties thru here refer to the existing R/W line where the Southerly and Northerly R/W fences of abandoned RR are indicated above; But we hold that the existing R/W lines are 33 ft on either side of the center line. SEE FAP-32 (of exist. highway.)



OFFICE REVISION
REVISED 7-23-65

PLAN	DATE
SURVEYED	6-10-64
PLOTTED	7-22-65
NOTED	7-22-65
NO. 22230	

PROFILE	DATE
SURVEYED	6-10-64
PLOTTED	7-22-65
NOTED	7-22-65
NO. 22230	

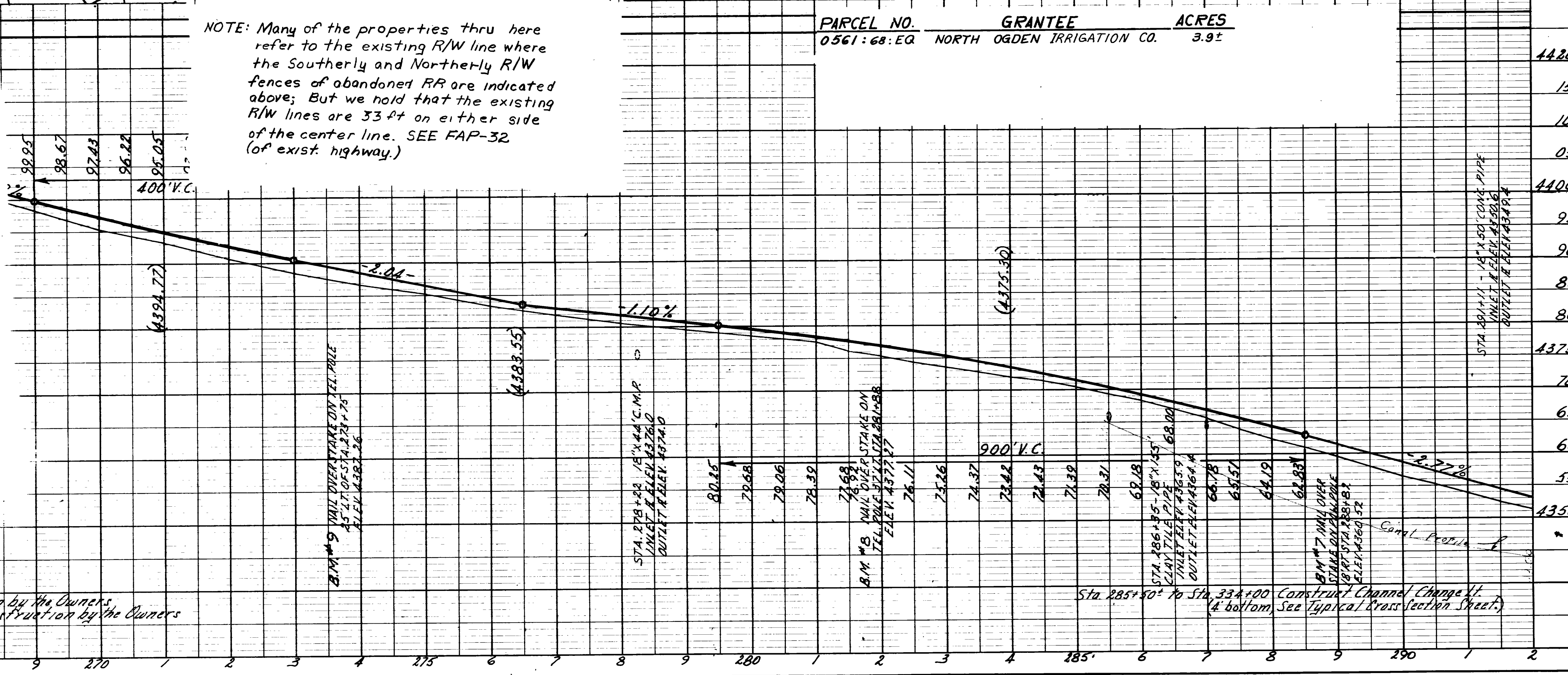


NOTE: TOPOGRAPHY IS TIED TO ORIGINAL SURVEY LINE.

NOTE: Many of the properties thru here refer to the existing R/W line where the Southerly and Northerly R/W fences of abandoned RR are indicated above; But we hold that the existing R/W lines are 33 ft on either side of the center line. SEE FAP-32 (of exist. highway.)

PARCEL NO.	GRANTEE	ACRES
0561: 68:EQ	NORTH OGDEN IRRIGATION CO.	3.9±

PARCEL NO.	OWNER	NET AC.	SQ. FT.
4420 0561: 52	LAWRENCE J. HARRIS ETAL	0.09±	3,852
53	JOSEPH M. JENSEN, ETAL	0.11±	4,768
15 54	LOYAL E. GOOCH, ETAL	0.11±	4,986
55	LAMAR JENSEN, ETAL	0.08±	3,480
10 56	HERBERT H. ISAKSON, ETAL	0.05±	2,380
57	GEORGE E. HUMPHREYS, ETAL	0.04±	1,934
58	JOYCE E. HUMPHREYS, ETAL	0.02±	1,044
05 60	DEVEAR T. SPIERS, ETAL	0.02±	740
61	BARBARA J. ANDERSON	0.03±	1,100
4400 62	GEORGE H. RHEES, ETAL	0.03±	1,148
63	LELAND W. RHEES, ETAL	0.06±	2,723
64	REFUND RHEES, (WIDOWER)	0.01±	578
95 68:F	SHERMAN L. JONES, ETAL	0.07±	
69:F	ARTHUR E. RHEES	0.18±	
90 70:E	EARL J. RHEES, ETAL	0.43±	
85 59	JESSIE MASON, ETAL	0.02±	805



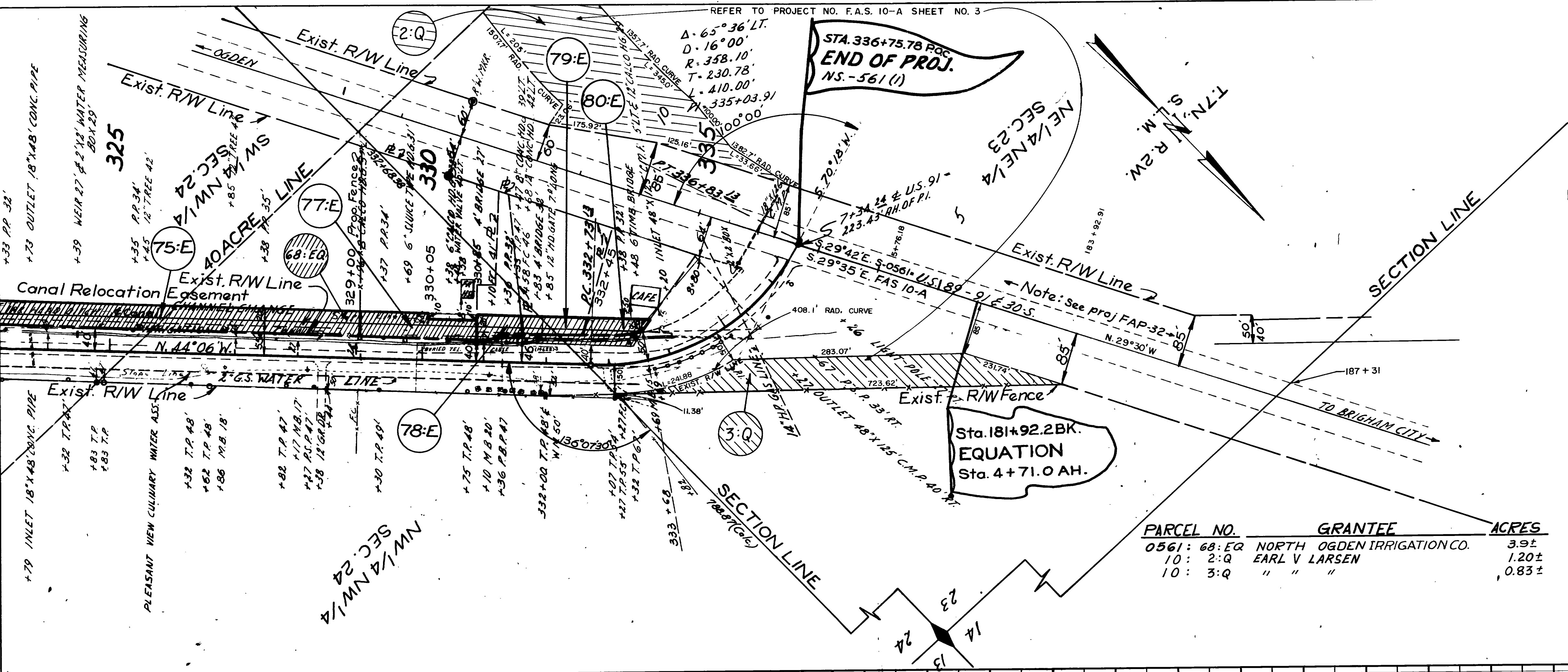
FED. ROAD DIST. NO.	STATE	FED. AID PROJ. NO.	FISCAL YEAR	SHEET NO.	TOTAL SHEETS
UTAH	UTAH	NS-561(1)		10	

REVISED 7-23-65
REVISED 5-4-77

REFER TO PROJECT NO. F.A.S. 10-A SHEET NO. 3

PLAN	DATE
SURVEYED BY K.M. MASDEN NOTED BY M.J. WILCH NO. 2227	8/1960
FLATTED BY K.M. MASDEN NO. 2227	8/1960
CHECKED BY M.J. WILCH NO. 2227	8/1960
NO. OF WAY CHECKED	

PROFILE	DATE
SURVEYED BY K.M. MASDEN NOTED BY M.J. WILCH NO. 2227	8/1960
GRADES CHECKED BY M.J. WILCH NO. 2227	8/1960
STRUCTURE NOTATIONS CHKD.	



PARCEL NO.	OWNER	NET AC
0561:75:E	PETER COLETTI, ET AL	1.79±
77:E	MILLCENT NEIL MATHEWS	0.15±
78:E	FLORENCE M. JOHANSEN	0.06±
79:E	VALBORG J. MCGREGOR WHEELER	0.09±
80:E	VERN H. TAYLOR, ET AL	0.06±

PARCEL NO.	GRANTEE	ACRES
0561:68:ER	NORTH OGDEN IRRIGATION CO.	3.9±
10:2:Q	EARL V LARSEN	1.20±
10:3:Q	" " "	0.83±

SCALE: 1"=100'

